

## Information Sheet

### Overview of Market Domain Data

Here, we cover the Market Domain Data process at a high level. If you're an SVA market participant, you'll find this a useful introduction to MDD.

#### What is Market Domain Data?

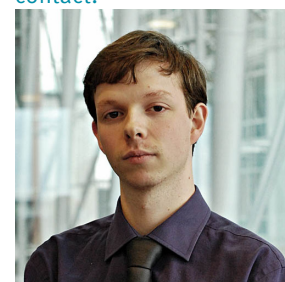
Market Domain Data (MDD) is the reference data set used by Suppliers, Supplier Agents and Licensed Distribution System Operators, and is essential to operating the Supplier Volume Allocation (SVA) Trading Arrangements. It contains a complete range of parameters such as Standard Settlement Configurations, Profile Classes and Grid Supply Point (GSP) Groups. Market Participants, such as Suppliers, can use this data to register MPANs within their respective Supplier Meter Registration System (SMRS) systems for the retail market.

MDD is managed by the rules set out in Balancing and Settlement Code Procedure (BSCP) 509 'Changes to Market Domain Data'. It covers the updating, maintenance and distribution of the data. MDD is managed on a version control and change procedure basis to ensure that the system is managed in an auditable way. The change process includes an extensive review process with the Supplier Volume Allocation Group (SVG) giving the final approval.

The MDD change schedule is based on the SVG meeting dates. The key dates for Market Participants who wish to submit changes into MDD is the Change Request deadline, Publish and go-live date.



For all enquiries, please contact:



**David Kemp**  
**Business Operations**  
**Analyst**

Phone: 020 7380 4303  
Email: [david.kemp@elexon.co.uk](mailto:david.kemp@elexon.co.uk)



Visit our website:  
[www.elexon.co.uk](http://www.elexon.co.uk)

## What data is in MDD?

The table below provides a breakdown of the data in MDD:

Data Item	Purpose
Market Participants	Data defining the Parties that trade, their roles and the effective dates they enter and/or leave the market.
GSP Groups	A distinct electrical system that consists of all, or part of, a distribution system owned and operated by a Distributor that is supplied from one or more Grid Supply Points for which the total supply into the GSP Group can be determined for each half hour.
Calendar Data	Data including dates of the Calendar Seasons, dates of British Summer Time and the timetable for certain operational requirements of the SVA Agent and Non Half Hourly Data Aggregators.
Standard Settlement Configurations	Logical representations of Non Half Hourly Metering Systems supported by SVA Settlement. The data includes Settlement register 'on' times, teleswitch rules and average fractions of yearly consumption and estimates of annual consumption.
Line Loss Factor Classes	References to identify a Line Loss Factor associated to a group of Metering Systems in a Distributor's system.
Profiling Data	Researched numerical information used to estimate and profile electricity consumption in half hour periods for Metering Systems throughout the year.
Meter Timeswitch Classes	Three digit code defining the Meter Timeswitch Classes, including Half Hourly and Non Half Hourly classes, Effective From and To Settlement Dates, permitted values of Meter Type code, Payment Type code and which Distributors support the code.
Valid Sets	Tables of information defining the discrete set of values allowed for certain data items, used to check MDD against misspecification or inconsistency.

## What do I need to do now?

To participate, you need to register a Market Participant ID (MPID) which identifies them and their registered roles.

When choosing a new MPID, whether for a new Supplier, an additional Supplier ID, or another role, you must select a unique four alpha character ID, not previously registered by another participant. To confirm that the chosen ID is acceptable, please contact the MDD Coordinator.

You can further specify the functions you undertake within the market using Role Codes, and the MDD contains details on these. For example Suppliers must register an MPID, a Role Code, and a minimum of one Base BM Unit in each GSP Group for each Supplier ID. Suppliers can register up to three separate Supplier IDs.

For more information, please refer to the MDD Handbook or the MDD Made Easy Guidance Note on the [MDD Webpage](#) on the ELEXON Website.

For more information on Market Domain Data, please email the MDD Coordinator at [mddc@elexon.co.uk](mailto:mddc@elexon.co.uk).



Your feedback helps us improve our communications. Please email [communications@elexon.co.uk](mailto:communications@elexon.co.uk) if you have any comments on this document or suggestions for other Information Sheets.