



New PARMS serials

Implementation of CP1334

Caroline Wright and Lawrence Jones
November 2010



Welcome and Introductions

- » Welcome and introductions
- » Morning session:
 - Background
 - Key changes
 - Working Day
 - Breakout group
- » Lunch – booked for 12:30
- » Afternoon session
 - Snapshot day/Breakout group
 - Information on new serials
 - Changes to redlined text
 - How new serials will be used
- » Wrap up



Objective for the session today

- » Reminder on what PARMS is and how serials are used
- » To give a high level overview of the changes of CP1334
 - What serials have changed; and
 - Which serials have stayed the same – out of scope of the review
- » Opportunity to ask any questions to support you in implementing CP1334



Background

What is PARMs?

» Performance Assurance Reporting and Monitoring System

SVAA by 7WDs



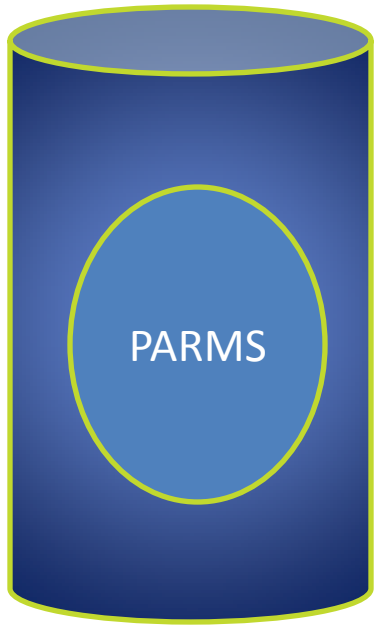
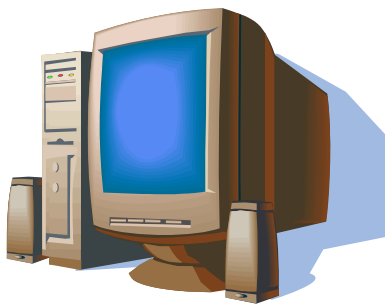
SMRA by 15WDs



Supplier
DPI/SP04 by 20WDs



Supplier Agent by 20WDs



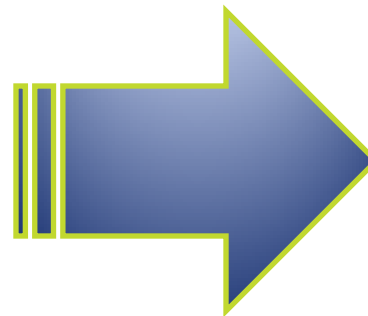
Why are serials important?

Settlement Risk Report

Supplier and agent dashboards

Performance Monitoring

Support other PATs/PAF



**ELEXON, the
PAB and
Suppliers
monitor
performance**

But what PARMS serials can't do

Doesn't give the answer or root cause analysis

Rely on agents to submit data accurately

Can give us insight but can be followed up by other PATs

Does let us know the 'health' of a process or MPID/role

Can not cover all scenarios but will cover the common one



Why have we introduced new serials?

Old serials too basic

Old serials not best suited to measure
Settlement Risks

Engagement from Suppliers & Supplier
Agents



What do the new serials bring?

Consistent Approach and better align/focus to key Settlement Risks; measure regular processes rather than controls

Report total number of events

MOA submissions separated into HH & NHH

No DA submissions

Timely and missing separate serials

Look at current Reporting Period

Reported by most appropriate agent

Report at GSP Group level

Concept unknown GSP

Concept unknown agent



What assumptions were applied?

BSCP will state the assumption applied

Serials no difference btw elective and mandatory HH meters

Erroneous flows can be excluded the next Reporting Period

Energised and de-energised to be included

Serial specify if CoS, CoA or CoMeter

Data via underpin will be counted as received

All reconciliation runs for both HH & NHH



New serial Classification

See p2 of general handout

NM11

Who the serial is
measuring

When the serial
was developed



New serial Classification

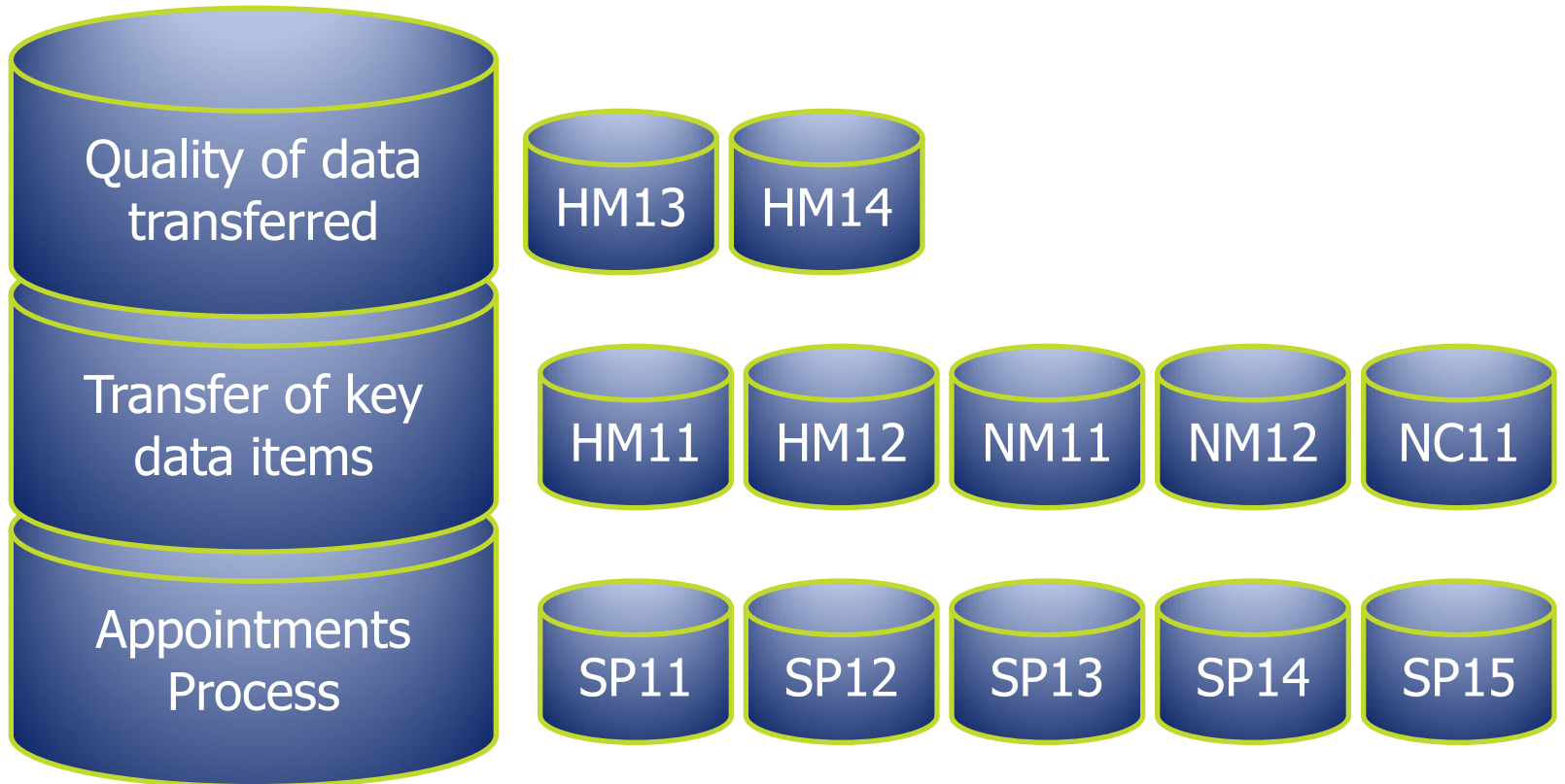
SP04

Who the serial is
measuring

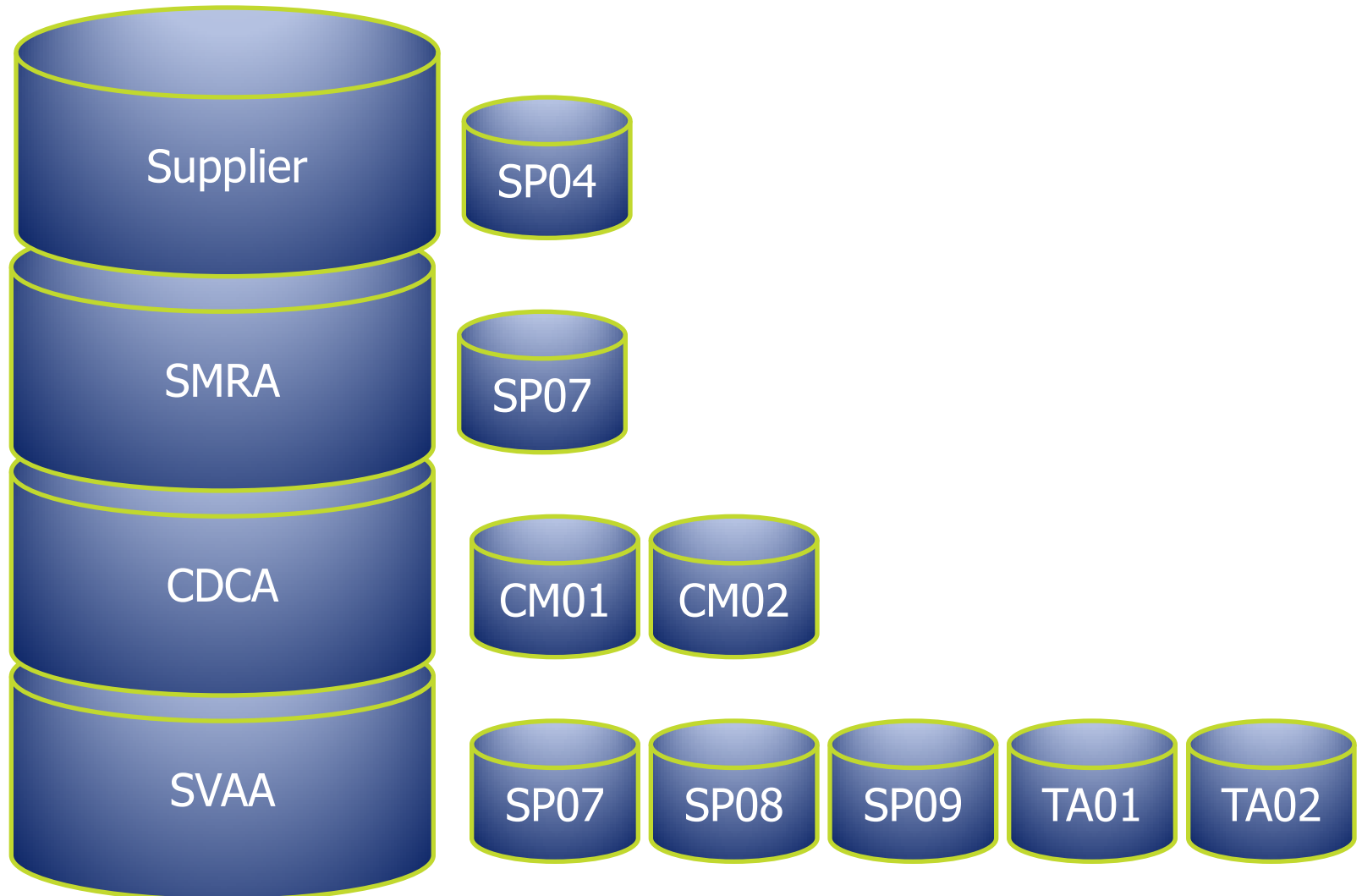
When the serial
was developed

What do the new serials look at?

See p3-5 of general handout

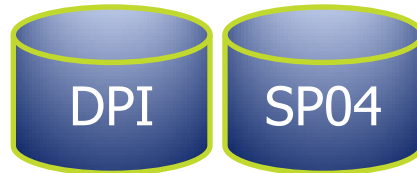


Serials out of scope of review

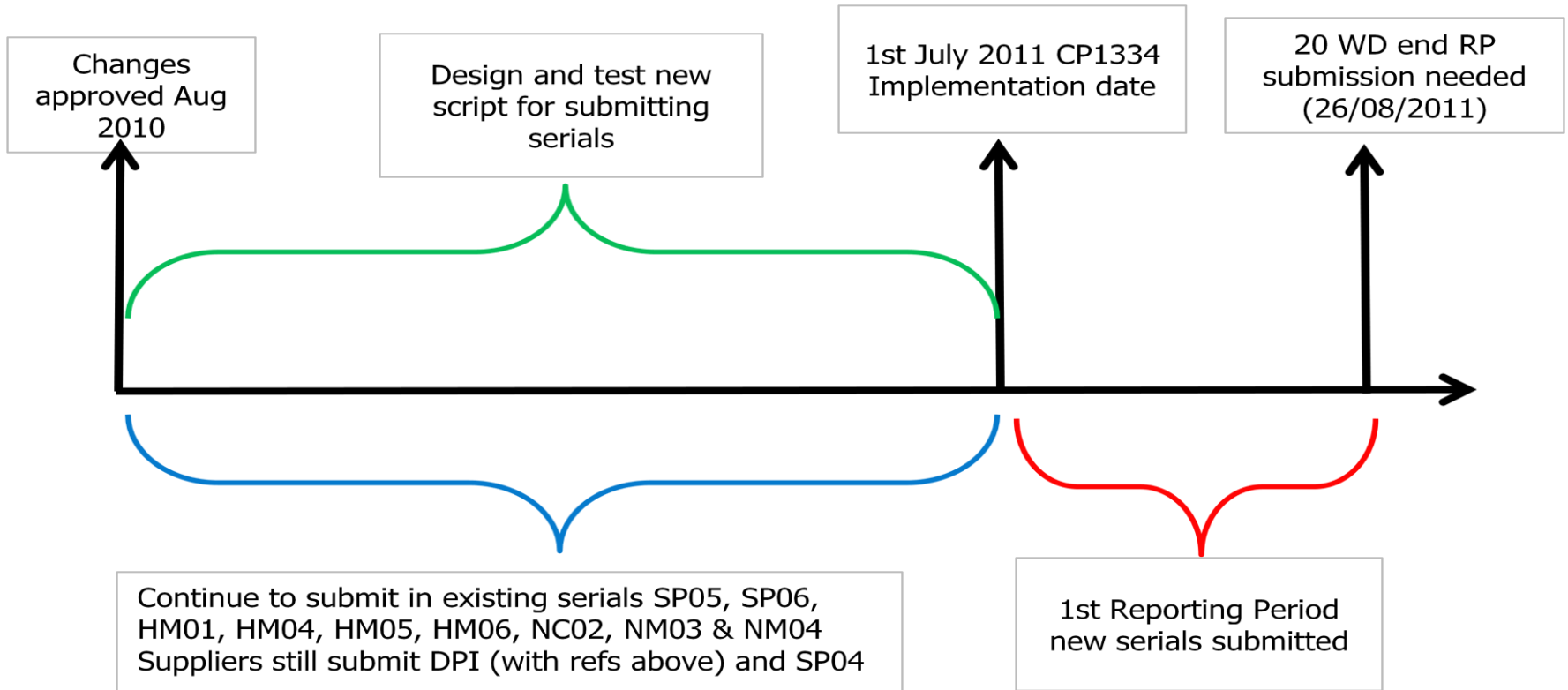


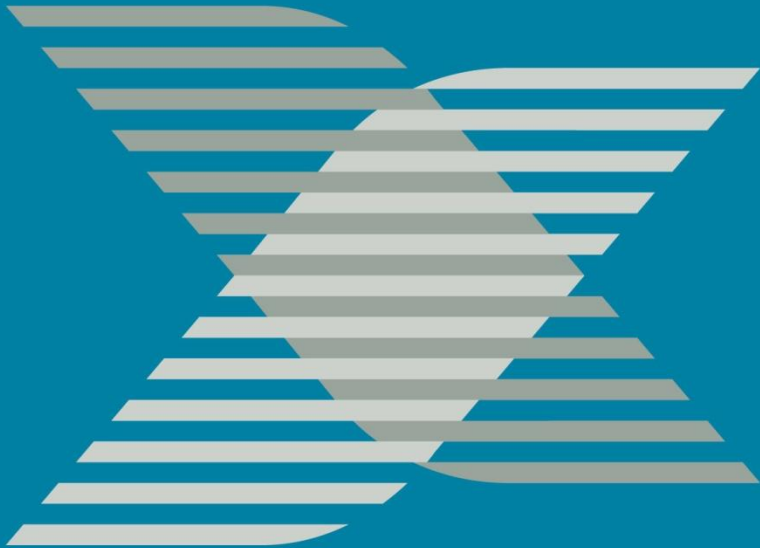
Serials to submit until June 2011 Reporting Period

See p6 of general handout



Timeline





What is staying the same and what do the changes mean to me ?

High level what has stayed the same?

- » Monthly submissions, data required 20WD after RP
- » Agents still report on behalf Suppliers
- » Supplier still submit DPI & SP04 files (DPI updated with new serial references)
- » Still can re-submit if required (still will not append files)
- » Still use key settlement flows
- » BSCP still give examples for calculation of serials
- » Automated reports from PARMS
- » Process for calculating Supplier Charges, in particular SP01





What does the change mean to me?

- » Whilst looking at same items will need an overhaul on how you calculate serials
- » System changes
 - Suppliers probably small just change DPI with new reference
 - Supplier Agents would expect bigger impact on systems
- » Incomplete data then SP01 Supplier Charge will be calculated
- » Missing or inaccurate data will impact the validity of the Performance Assurance Framework and other Performance Assurance Techniques (PATs)
 - Providing education days
 - Communicate all the information you need
 - High priority for PAB - letters



Working day





Definition on calculating Working Days

- » To calculate the number of Working Days you will need to
- Count from and inclusive of the start event, to and inclusive of the end event

Start Event							End Event
WD1	WD2	WD3	WD4	WD5	NON-WD	NON-WD	WD6

- » This event took 6 WDs to complete
- » Bank holidays are non-WDs
 - Only English & Welsh bank holidays

How do I count Working Days? (1 of 3)

EFD in D0155

Receipt of D0155

= 24WD



RP

June 2011

July 2011

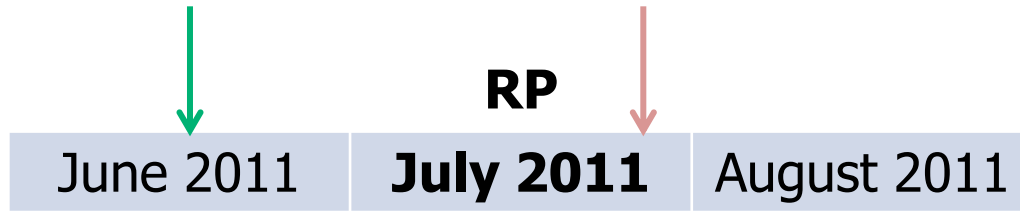
August 2011

June 2011						
M	T	W	T	F	S	S
-	-	1	2	3	4	5
6	7	8	9	10	11	12
13	14	15	16	17	18	19
20	21	22	23	24	25	26
27	28	29	30	-	-	-
July 2011						
-	-	-	-	1	2	3
4	5	6	7	8	9	10
11	12	13	14	15	16	17
18	19	20	21	22	23	24
25	26	27	28	29	30	31

How do I count Working Days? (2 of 3)

EFD in D0155 Receipt of D0155 @ 17:45

= 25WD



June 2011						
M	T	W	T	F	S	S
-	-	1	2	3	4	5
6	7	8	9	10	11	12
13	14	15	16	17	18	19
20	21	22	23	24	25	26
27	28	29	30	-	-	-
July 2011						
-	-	-	-	1	2	3
4	5	6	7	8	9	10
11	12	13	14	15	16	17
18	19	20	21	22	23	24
25	26	27	28	29	30	31

How do I count Working Days? (3 of 3)

EFD in D0148

Receipt of D0148

= 19WD



RP

December 2011

January 2012

February 2012

December 2011						
M	T	W	T	F	S	S
-	-	-	1	2	3	4
5	6	7	8	9	10	11
12	13	14	15	16	17	18
19	20	21	22	23	24	25
26	27	28	29	30	31	-
January 2012						
-	-	-	-	-	-	1
2	3	4	5	6	7	8
9	10	11	12	13	14	15
16	17	18	19	20	21	22
23	24	25	26	27	28	29
30	31	-	-	-	-	-



How do I count Working Days for Settlement Run Submissions?

Before SF	Before R1	Before R2	Before R3	Before RF	After RF
+1 to +16 WDs	+17 to +39 WDs	+40 to +84 WDs	+85 to +154 WDs	+155 to +292 WDs	+293 WDs

- » Where data flow is received +290 WDs after EFD, it should be reported in the 'before RF' band
 - Even though data flow is unlikely to have been processed in time for RF Run
- » Not aligned fully to the Settlement calendar but will give the indication of the Settlement Run impacted



**Serial specific
information – timeliness
and quality**





SP11 – Timely appointment of agents

See p7-10 of general handout


- » Is an amendment to current SP05 serial
- » HHDC, NHHDC, HHMOA & NHHMOAs will report, using their EFD in the D0155
- » Will cover both CoS & CoA events
- » Exclude any D0155s with the same EFD
 - covers changes to contractual terms such as a change to the read cycle



SP12 – Timely notification of changes of the DA via D0148

See p11 of general handout

- » Is an amendment to current SP06 serial
- » **HHDC** & **NHHDC** will report using the **DA EFD** in the **D0148**
- » Will cover both CoS & CoA
- » Exclude any D0148s that do not contain any DA details or where details the same
- » If the GSP is not known (where the associated D0155 has not been sent before D0148 has been processed) then should use the “unknown GSP Group ID”



SP13 – Timely notification of changes of the MOA via D0148

See p12 of general handout

- » Is an amendment to current SP06 serial
- » **HHDC** & **NHHDC** will report using the **MOA EFD in the D0148**
- » Will cover both CoS, CoA & new appointments
- » Exclude any D0148s that do not contain any MOA details
- » If the GSP is not known (where the associated D0155 has not been sent before D0148 has been processed) then should use the “unknown GSP Group ID”



SP14 - Timely notification of changes of the DC via D0148

See p13 of general handout

- » Is an amendment to current SP06 serial
- » HHMOA & NHHMOA will report using the DC EFD in the D0148
- » Will cover both CoS & CoA
- » Exclude any D0148s that do not contain any DC details
- » If the GSP is not known (where the associated D0155 has not been sent before D0148 has been processed) then should use the “unknown GSP Group ID”



HM11 – Timely sending of HH MTDs to HHDCs

See p15 of general handout

- » Is an amendment to current HM04 serial
- » **HHDC** report using the **MSMTD EFD** in the D0268
- » HHDC will report on timeliness of HHMOA sending MTDs
- » Will only cover meter changes where no associated CoA (sending MTDs on a CoA is captured in serial HM12)
- » Uses list in BSCP514 to identify key MTD fields
- » Does not include new connections



NM11 – Timely sending of NHH MTDs to NHHDCs

See p19 of general handout

- » Is an amendment to current NM03 serial
- » NHHDC report using the MSMTD EFD and receipt date in D0150
- » NHHDC will report on timeliness of sending MTDs
- » Will only cover meter changes where no associated CoA (sending MTDs on a CoA is captured in serial NM12)



HM13 – Quality of HH MTDs

See p17 of general handout

- » Is an amendment to current HM06 serial
- » **HHDC** reports using the **MSMTD EFD** in the D0268
- » HHDC will report on how many times the HH MTDs were re-sent with the same MSMTD EFD where there has been a change in a key field in the D0268
- » Uses list in BSCP514 to identify key MTD fields
- » Different standards to other serials:
 - Std 1: Total No of D0268s received within reporting period;
 - Std 2: Total No of D0268s that are resubmissions with the same EFD and with a key data field change; and
 - Std 3: No of affected re-sent Metering Systems per MSMTD
- » Exclude if the MSMTD EFD is different as could be a genuine update to MTDs



HM14 – Timely HH Meter Investigation Requests

See p18 of general handout

- » Is an amendment to current HM01 serial
- » HHDC reports using the date fault detected and date of action in D0002
- » HHDC will report on timeliness of Metering System investigations
- » Only D0002 used in calculation and so will not make distinction on who raised investigation (D0001)

» Key concepts:

- Working Day
- Reconciliation Runs

Snapshot Day





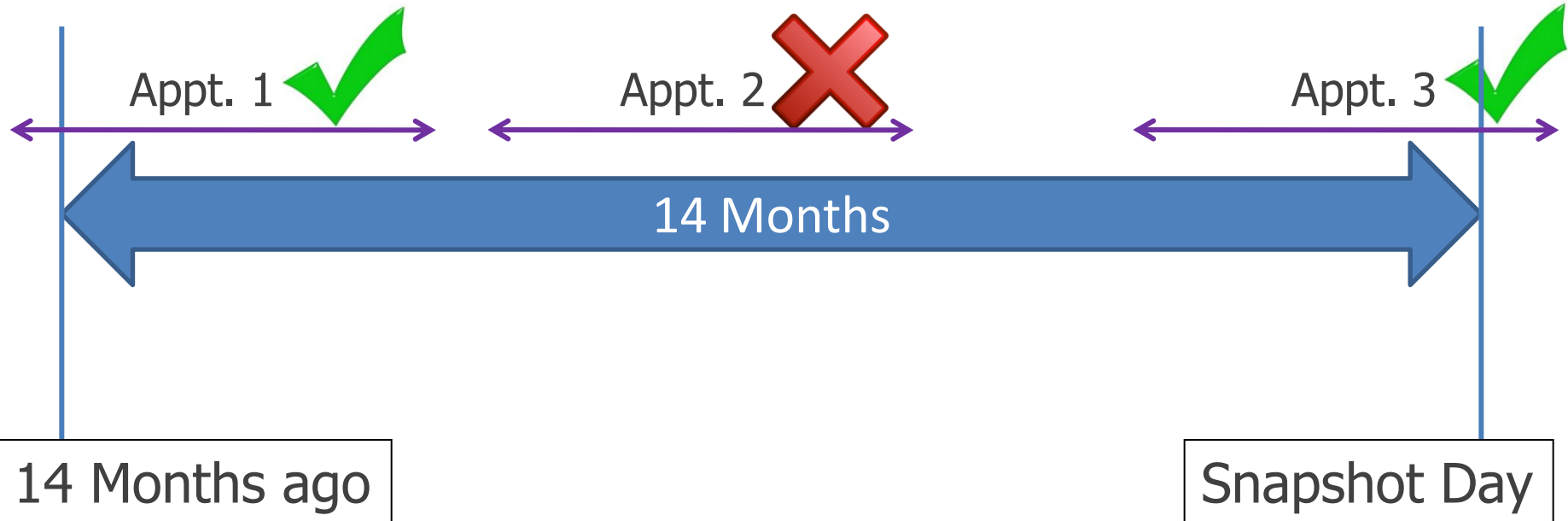
What is a snapshot day?

- » A process for identifying missing data flows
- » Used by serials:

Serial	Name	Missing Flow
SP15	Missing Appointments of Agents	D0148
HM12	Missing HH MTDs	D0268
NM12	Missing NHH MTDs	D0150
NC11	Missing NHH Meter Reads & History from Old NHHDC to New NHHDC	D0010 & D0152

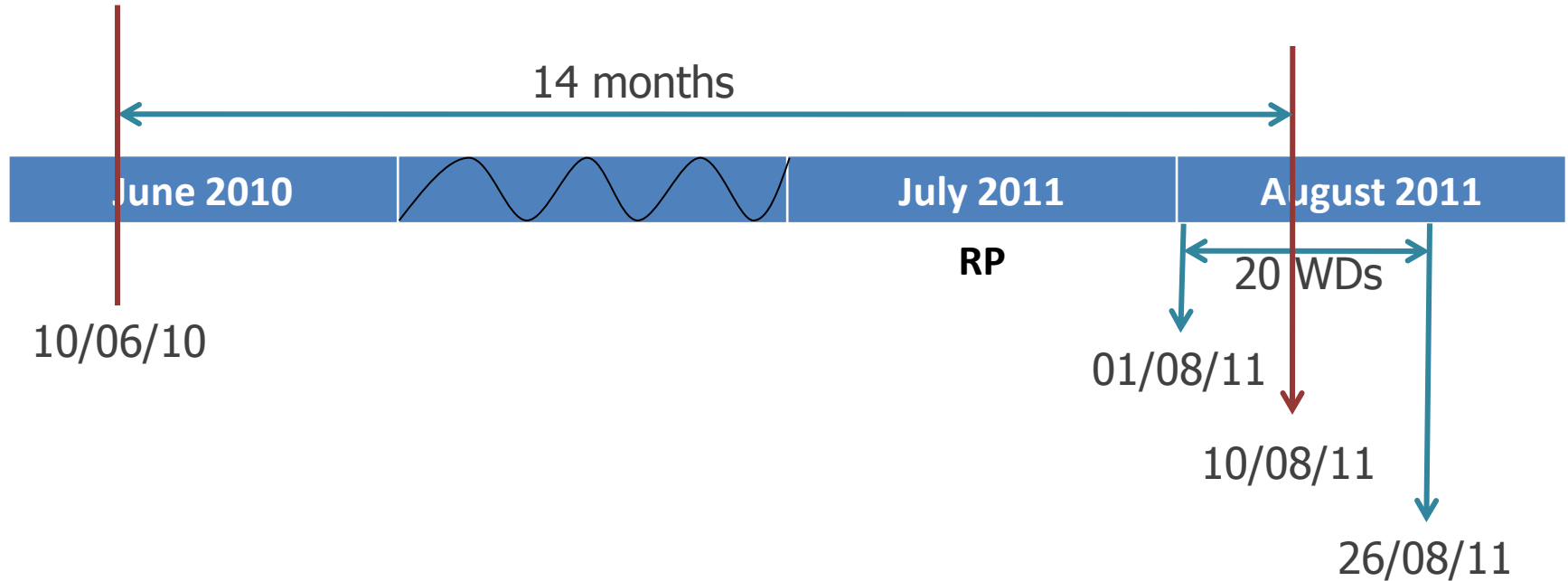
- » A 2-step process:
 - Identify appointments
 - Identify missing data flows for those appointments

What is a Snapshot Day?



- » Identify appointments = 3 appointments
- » Identify missing data flows = 1 missing

When do I take my snapshot?



- » Snapshot must be taken between 1 WD and 20 WD after RP



**Serial specific
information – missing
and snapshot day**





SP15 – Missing appointment of agents

DC reporting on missing D0148s

- » Is an amendment to current SP06 serial
- » **HHDC** & **NHHDC** will report using their **EFD in the D0155**
- » DC will report on missing D0148s for DA and MOAs
- » Will cover both CoS & CoA events
- » Will use the snapshot day to create:
 - Std 1: No of live registrations held in previous 14 months to snapshot day; and
 - Std 2 – No of registrations for which no D0148 held

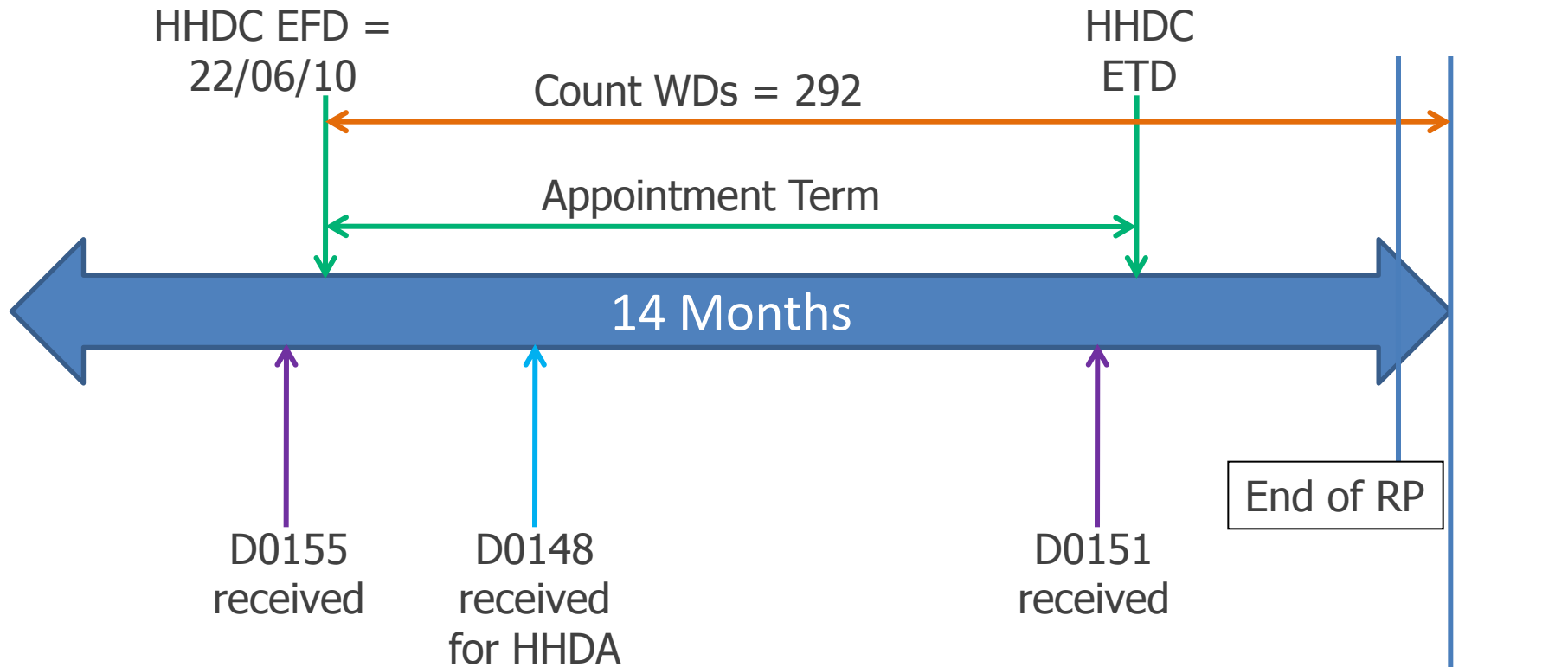
See p14 of general handout
& p2 of snapshot handout




SP15 standards

SP15 standards to be submitted	
Standard 1	Number of live registrations held in previous 14 months to snapshot day
Standard 2	Number of registrations for which no D0148 is held
Standard 3	Number of D0148s missing +17WDs and +39 WD from EFD (after SF)
Standard 4	Number of D0148s missing +40WDs and +84 WD from EFD (after R1)
Standard 5	Number of D0148s missing +85WDs and +154 WD from EFD (after R2)
Standard 6	Number of D0148s missing +155WDs and +292 WD from EFD (after R3)
Standard 7	Number of D0148s missing +293 WD from EFD (after RF)

Scenario one – SP15



• HHDC reporting on missing D0148s for HHDA & HHMOA



MOA SP15 – Missing appointment of agents

MOA reporting on missing D0148s

- » Is an amendment to current SP06 serial
- » HHMOA & NHHMOA will report using their EFD in the D0155
- » MOA will report on missing D0148s for DC only
- » Will cover both CoS & CoA
- » Will use the snapshot day to create:
 - Std 1: No of live registrations held in previous 14 months to snapshot day; and
 - Std 2 – No of registrations for which no D0148 held



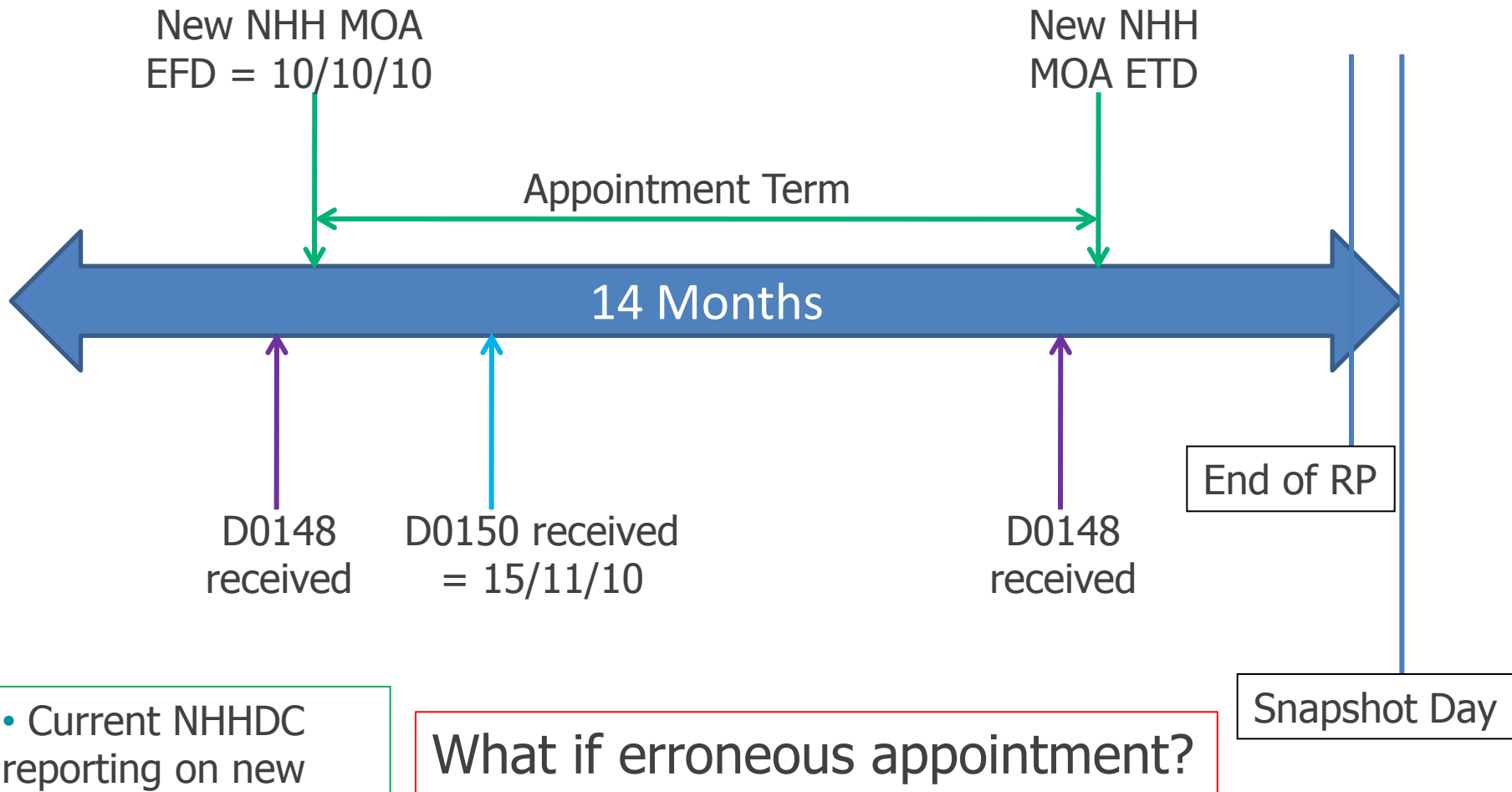
NM12 – Missing NHH MTDs

Current NHHDC reporting on new NHHMOA

- » Is an amendment to current NM03 serial
- » Current NHHDC reports using the new NHHMOA EFD in D0148
- » Current NHHDC reports on new NHHMOA sending D0150
- » Current NHHDC will only submit serial where there has been a CoMOA but no CoDC
- » Should only report where D0148 received for a pre-existing appointments → not new appointment (D0155)
- » Missing considered to be where D0148 received but no associated D0150
- » Excludes new connections & UMS
- » Will use snapshot day to create:
 - Std 1: No. of live registrations held in previous 14 months to snapshot day; and
 - No. of registrations for which no D0150 is held

See p20 of general handout
& p3 of snapshot handout

Scenario Two– NM12



- Current NHHDC reporting on new NHHMOA sending NHH MTDs



NM12 - Missing NHH MTDs

New NHHDC reporting on current NHHMOA

- » Is an amendment to current NM03serial
- » New NHHDC reports using its EFD in D0155
- » New NHHDC reports on current NHHMOA sending D0150
- » New NHHDC will only submit serial where there has been a CoDC but no CoMOA
- » Missing considered to be where D0155 received but no associated D0150
- » If corresponding D0148 has not been received, the current NHHMOA should be reported as 'unknown' = UUUU
- » Excludes new connections
- » Will use snapshot day to create:
 - Std 1: No. of live registrations held in previous 14 months to snapshot day; and
 - No. of registrations for which no D0150 is held



NM12 - Missing NHH MTDs

New NHHMOA reporting on old NHHMOA

- » Is an amendment to current NM04 serial
- » New NHHMOA reports using its **EFD in D0155**
- » New NHHMOA reports on old NHHMOA sending D0150
- » New NHHMOA will only submit serial where there has been a CoMOA and no CoDC
- » Missing considered to be where D0155 received but no associated D0150
- » If corresponding D0148 has not been received, the old NHHMOA should be reported as 'unknown' = UUUU
- » Excludes new connections
- » Will use snapshot day to create:
 - Std 1: No. of live registrations held in previous 14 months to snapshot day; and
 - No. of registrations for which no D0150 is held



NM12 – Missing HH MTDs – a re-cap

» New NHHDC report on current NHHMOA not sending MTDs



» Current NHHDC report on new NHHMOA not sending MTDs



» New NHHMOA report on old NHHMOA not sending MTDs





HM12 – Missing HH MTDs

New HHMOA reporting on old HHMOA

- » Is an amendment to current HM05 serial
- » New HHMOA reports using its EFD in the D0155
- » New HHMOA will report on old HHMOA not sending HH MTDs
- » Will only cover CoMOA events
- » Serial will use an “unknown MOA” where D0148 yet to be received as won’t know who to expect HH MTDs from
- » Missing classed as D0155 received but no associated D0268
- » Will use the snapshot day to create:
 - Std 1: No. of live registrations held in previous 14 months to snapshot day; and
 - Std 2 – No. of registrations for which no D0268 held

See p16 of general handout
& p4 of snapshot handout

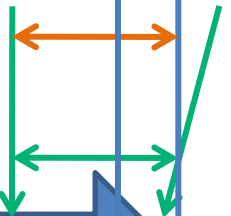
Scenario Three – HM12

• New HHMOA reporting on old HHMOA sending HH MTDs

• HHMOA EFD = 20/07/11
• WD count = 16

14 Months

HHMOA EFD HHMOA ETD



End of RP

D0155 received

D0151 received

Snapshot Day = 10/08/11

What if it is a UMS connection?

New HHDC reporting on current HHMOA

- » Is an amendment to current HM04 serial
- » New HHDC report using its EFD in the D0155
- » New HHDC will report on HHMOA not sending HH MTDs
- » Will only cover CoDC events
- » Serial will use an “unknown MOA” where D0148 yet to be received as won’t know who to expect HH MTDs from
- » Missing classed as D0155 received but no associated D0268
- » Will use the snapshot day to create:
 - Std 1: No. of live registrations held in previous 14 months to snapshot day; and
 - Std 2 – No. of registrations for which no D0268 held

Current HHDC reporting on new HHMOA

- » Is an amendment to current HM04 serial
- » Current HHDC reports using the EFD of the new MOA in the D0148
- » Current HHDC will report on new HH MOA not sending HH MTDs
- » Current HHDC will only submit serial where there has been a CoMOA but no CoDC
- » Missing classed as D0148 received but no associated D0268
- » Will use the snapshot day to create:
 - Std 1: No. of live registrations held in previous 14 months to snapshot day; and
 - Std 2 – No. of registrations for which no D0268 held



HM12 – Missing HH MTDs – a re-cap

» New HHDC report on current HHMOA not sending MTDs



» Current HHDC report on new HHMOA not sending MTDs



» New HHMOA report on old HHMOA not sending MTDs





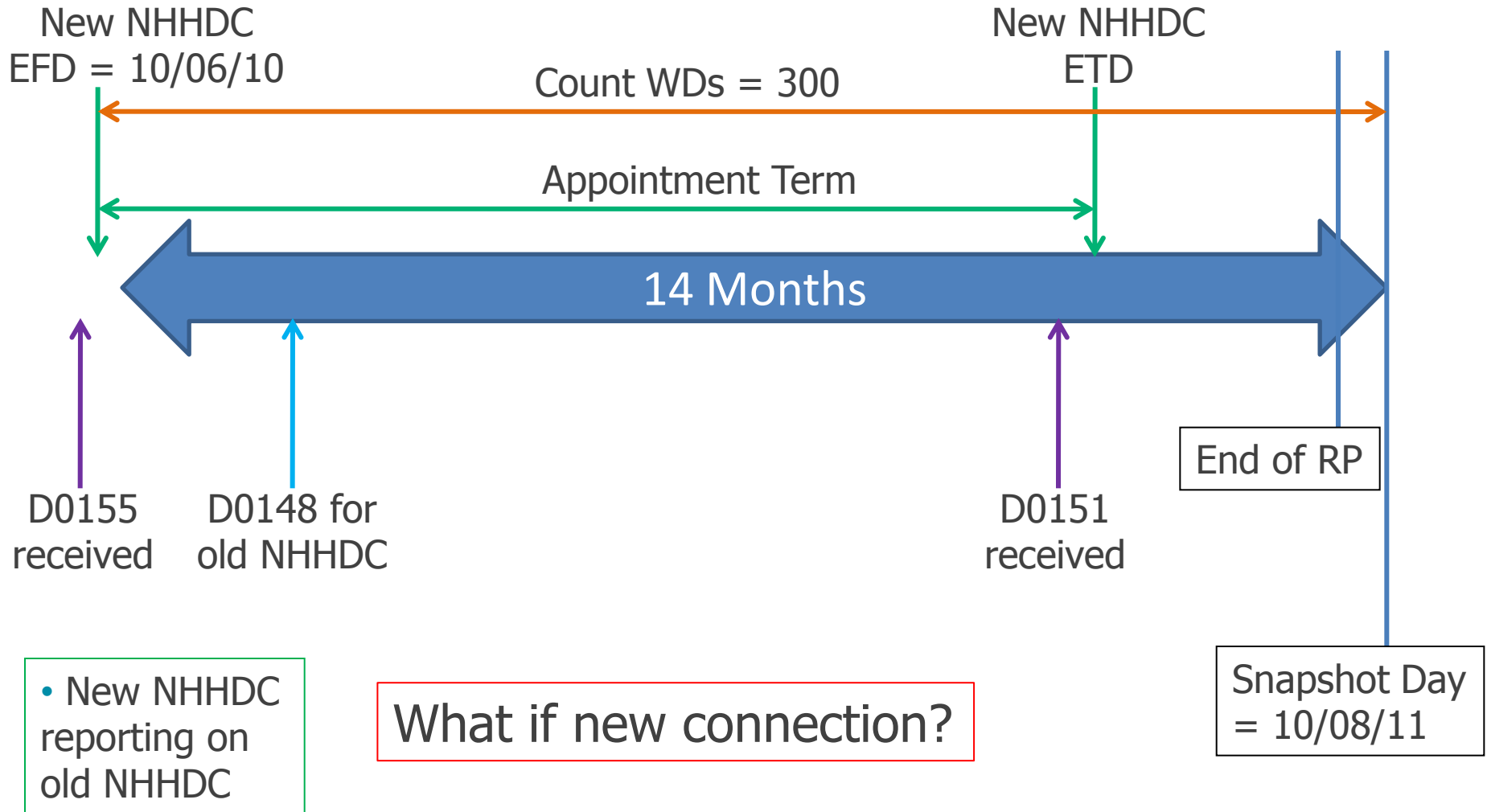
NC11 – Missing NHH Meter Reads & History from Old NHHDC to New NHHDC

New NHHDC reporting on old NHHDC

- » Is an amendment to current NC02 serial
- » New NHHDC reports using its EFD in D0155
- » New NHHDC reports on old NHHDC not sending D0010 & D0152 on CoDC
- » Missing considered to be where D0155 received but associated D0010 and D0152 not received
- » Should exclude new connections & UMS
- » Where old NHHDC details not known, should be reported as 'unknown' = UUUU
- » Will use snapshot day to create:
 - Std 1. no. of live registrations held at any point in last 14 months to snapshot day
 - Std 2. no of registrations for which no D0010 and D0152 is held

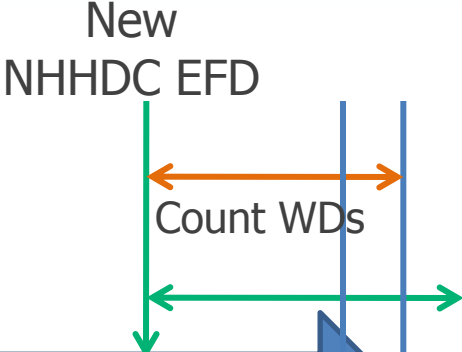
See p21 of general handout & p5-6 of snapshot handout

Scenario Four– NC11



Scenario Five - NC11

- New NHHDC EFD = 09/06/11
- WD count = 45



What key information is missing, and what are the consequences?

- New NHHDC reporting on old NHHDC

D0155 received

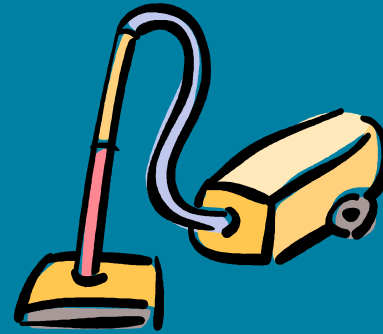
End of RP

Snapshot Day = 10/08/11





Update on changes to redlined text



- » Notes columns will be updated e.g. to mention that bank holidays are non-WDs & column headings to be reviewed
- » Make explicit in 'standard 1' whether count includes total no. of events or not
- » Negative WD counts and snapshot day count to be corrected
- » Make explicit in Appendix A whether it is old, new or current agent that submits and on whom
- » SP13 (in appendix B) and SP14 in Appendix A erroneously mentions DA in standards
- » NM11 & HM11 calculation table will be corrected
- » Make explicit whether CoA serials also include CoS events
- » Make explicit whether serials include UMS, new connections and de-energised MSIDs
- » NC11 will include 'unknown' (old) NHHDC and text made clearer





**How are we going to
use the data in the new
serials?**

What is the impact on PARMS Reports?

Supplier Reports

Peer
Comparison

Supplier
Charges

OSM Reports

Supplier & Supplier Agent Reports

Dashboards

SRR



How could we/you use the data? BUSRR and reporting

- » Will be used to monitor risk
- » Will use to drive relevant BUSRRs, will use the context information
- » Performance stats should be more reflective of risk
- » See where there are blocks in the process of sending key data items
- » Use the reconciliation run break down
- » Trigger for other PATs such as TA checks, BSC Audit
- » Tool for Suppliers to manage their agents

BUSRR and reporting

SRIN	Risk Category	Sector	Risk Description	Net Sig.	Relevant PAPs	Deployment Notes new Serials
SR0022	Management of Metering System Data for Meter Reading Acquisition	HH	The risk that HHMOAs does not provide correct Meter Technical Details to the HHDCs resulting in Meter readings being misinterpreted or not collected.	12	HH Supplier, HHMOA	HM13
SR0024	Management of Metering System Data for Meter Reading Acquisition	NHH	The risk that NHHMOAs do not provide Meter Technical Details to the correct NHHDCs resulting in Meter readings being not collected.	12	NHH Supplier, NHHMOA	NM11 measures timeliness and NM12 covers where MTDs are not sent at all
SR0025	Management of Metering System Data for Meter Reading Acquisition	HH	The risk that HHMOAs do not provide Meter Technical Details to the correct DCs resulting in Meter readings being not collected.	12	HH Supplier, HHMOA	HM11 measures timeliness and HM12 covers where MTDs are not sent at all
SR0047	Management of Metering System Data for Derivation of Energy Volumes	NHH	The transition on change of NHHDC, new NHHDCs do not receive monthly historical NHH Metered Data and Meter Reading resulting in new NHHDCs being unable to validate and process subsequent readings and hence the use of default or old data in Settlements.	10	NHH Supplier, NHHDC	NC11
SR0001	Supplier Hub Management for Meter Reading Acquisition	HH	The risk that Suppliers do not notify change of MOA to other associated agents resulting in the HHDCs rejecting updated Meter Technical Details and Meter readings being misinterpreted or not collected.	9	HH Supplier	SP13, SP15
SR2834	Supplier Hub Management for Meter Reading Acquisition	HH	The Risk that Suppliers do not notify change of DC to other associated agents resulting in the HHMOAs not sending MTDs to the right DCs and meter readings.	9	HH Supplier, HHDC, HHMOA	SP14, SP15

BUSRR and reporting

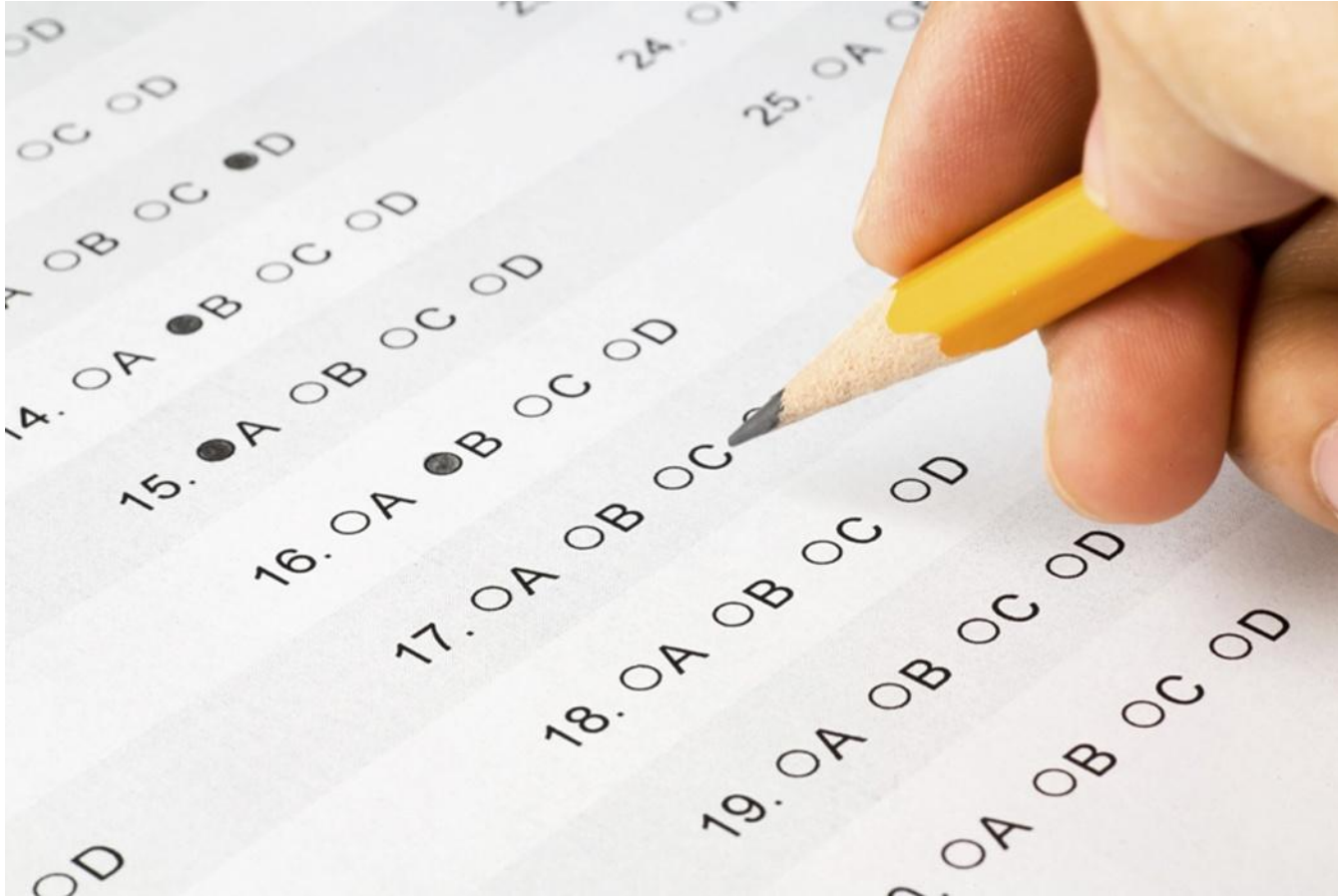
SRIN	Risk Category	Sector	Risk Description	Net Sig.	Relevant PAPs	Deployment Notes new Serials
SR0112	Management of Physical Assets for Meter Reading Acquisition	HH	The risk that HHDCs use data from faulty Metering Systems resulting in incorrect data being entered into Settlement.	7	HH Supplier, HHDC, HHMOA	HM14 measures the time taken to complete an investigation (secondary)
SR0002	Supplier Hub Management for Meter Reading Acquisition	NHH	The risk that Suppliers do not appoint NHHDCs resulting in default data being entered into Settlement.	6	NHH Supplier	SP11
SR0004	Supplier Hub Management for Meter Reading Acquisition	NHH	The risk that Suppliers do not notify change of MOA to other associated agents resulting in NHHDCs rejecting updated Meter Technical Details and Meter readings being misinterpreted or not collected.	6	NHH Supplier	SP13, SP15
SR0005	Supplier Hub Management for Meter Reading Acquisition	HH	The risk that Suppliers do not appoint HHMOAs resulting in the inability to maintain Metering Systems and associated technical details and may result in default data being entered into Settlement.	6	HH Supplier	SP11
SR0012	Supplier Hub Management for Allocation of HH Energy Volumes to Trading Parties	HH	The risk that deappointment of HHDCs is not successful resulting in over counting of energy in Settlement.	6	HH Supplier	SP12
SR0033	Management of Metering System Data for Meter Reading Acquisition	NHH	The risk that old NHHMOAs do not send Meter Technical Details to new NHHMOAs resulting in new NHHMOAs not having the Meter Technical Details for the Metering Systems to send on or use as required.	6	NHH Supplier, NHHMOA	NM12 (NM11 secondary as measures timeliness)
SR0034	Management of Metering System Data for Meter Reading Acquisition	HH	The risk that old HHMOAs do not send Meter Technical Details to the new HHMOAs resulting in new HHMOAs not having the Meter Technical Details for the Metering Systems to send on or use as required.	6	HH Supplier HH MOA	HM12 (HM11 secondary as measures timeliness)
SR2835	Supplier Hub Management for Meter Reading Acquisition	NHH	The Risk that suppliers do not notify change of DC to other associated agents resulting in the NHHMOAs not sending MTDs to the right DCs and meter readings.	6	NHH Supplier, NHHMOA, NHHDC	SP14, SP15
SR0003	Supplier Hub Management for Meter Reading Acquisition	HH	The risk that Suppliers do not appoint HHDCs resulting in default data being entered into Settlement.	4	HH Supplier	SP11
SR0006	Supplier Hub Management for Meter Reading Acquisition	NHH	The risk that Suppliers do not appoint NHHMOAs resulting in the inability to maintain the Metering System and associated technical details and may result in default data being entered into Settlement.	4	NHH Supplier	SP11



What are the next steps?

- » Supplier and Supplier Agents to amend systems to calculate serials in advance of the July 2011 Reporting Period
- » ELEXON will do some consistency checks (pre July 2011)
- » Potential for TA checks (post July 2011)
- » Contact us for any help or support

Quiz time!!!



Key contacts and further information

- » Any further questions please contact Dickon Prior on dickon.prior@elexon.co.uk or 0207 380 4032



- » PAB report:
[http://www.elexon.co.uk/documents/bsc_panel_and_panel_committees/pab_meeting_2009 - 105 - _papers/pab105_05_parms_serial_review_2009_final_report.pdf](http://www.elexon.co.uk/documents/bsc_panel_and_panel_committees/pab_meeting_2009_-_105_-_papers/pab105_05_parms_serial_review_2009_final_report.pdf)
- » Change Proposal:
http://www.elexon.co.uk/changeimplementation/findachange/proposal_details.aspx?proposalid=873

